

Customer :

customer

Customer part :

customer part

Comment :

Comment

S1=0.03

S2=0.05

Tmax=421

Tp S2=460.0

PI=0.42

HI=50

Sample =3453.5

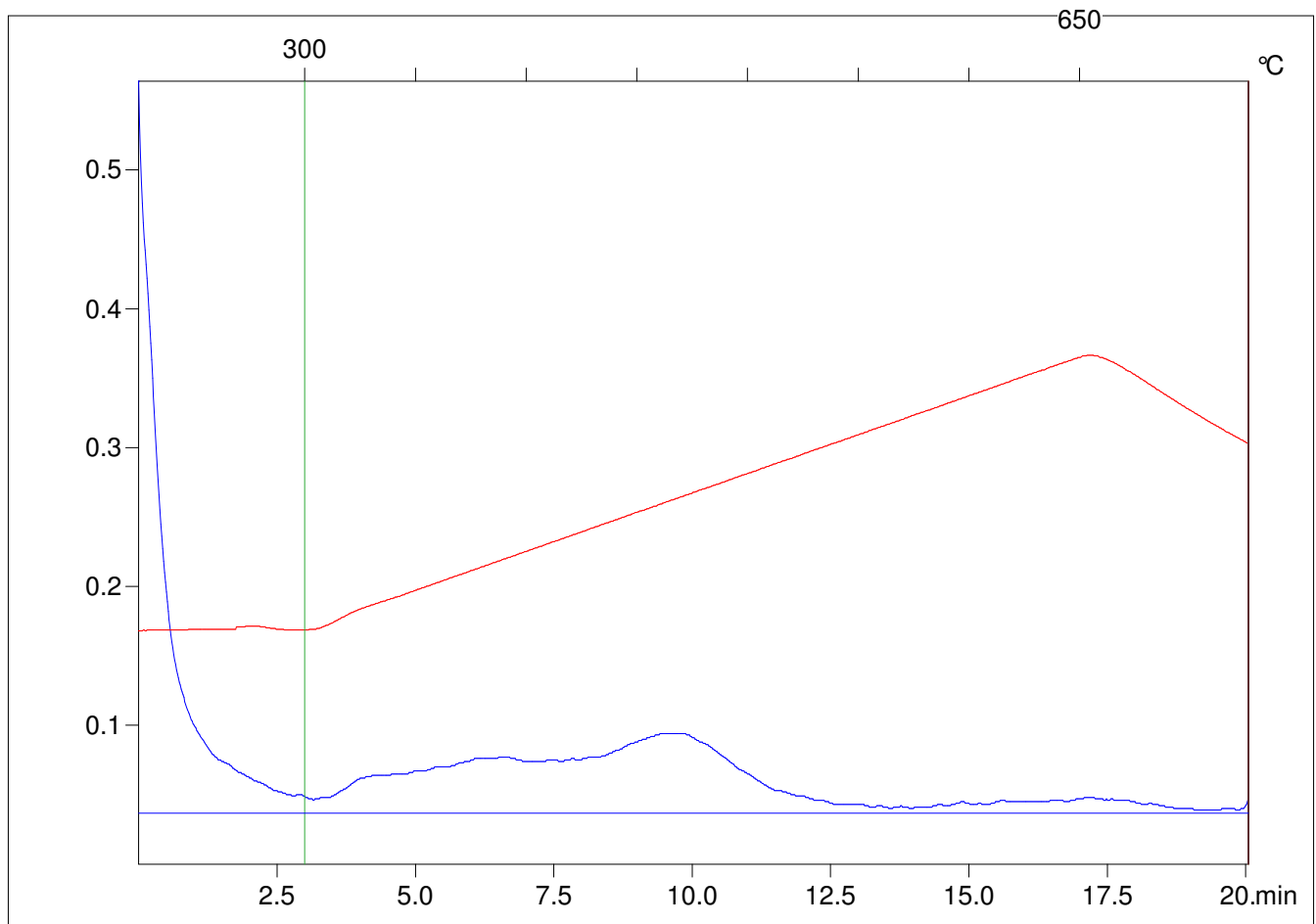
Method =Bulk Rock

Cycle=Basic

KFID(10*9)=1550

Qty =70.6

TOC=0.1



C:\VINC\PK130315\PK052.R00 : FID pyrolysis graphic

State

Pyro Status

Oxi Status